

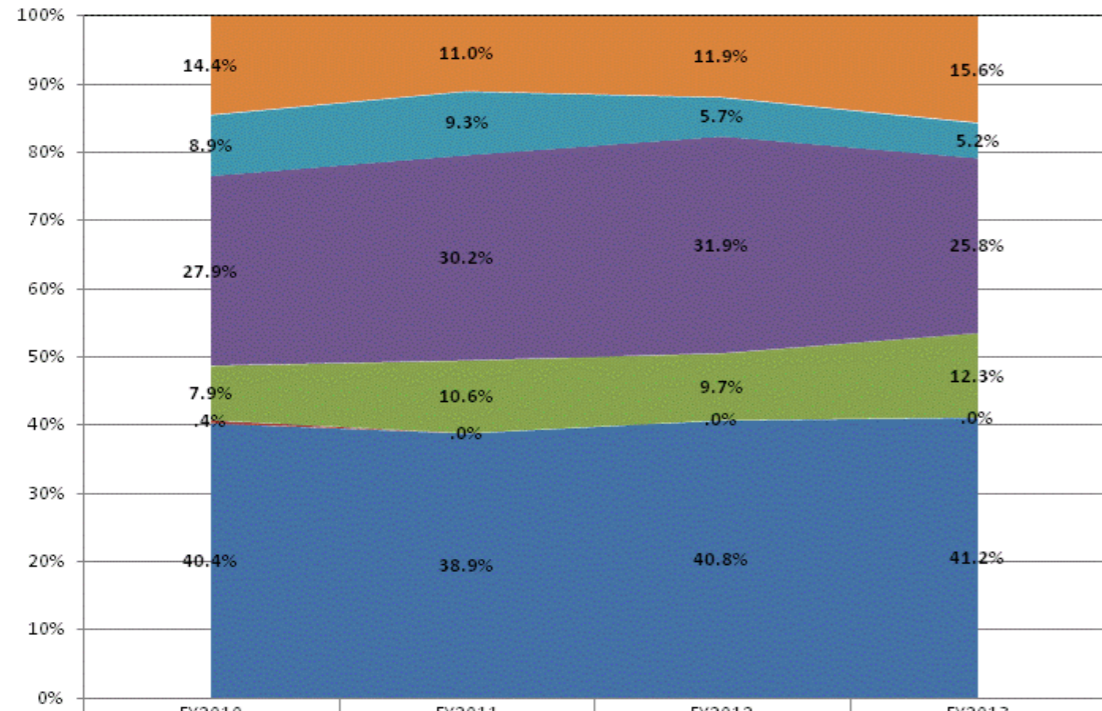
**School Corporation Expenditures by Expenditure Type
Biannual Financial Report Data July 2012 - June 2013
21st Century Charter Sch of Gary (9545)**

21st Century Charter Sch of Gary (9545)

	FY 2006	FY06 % of Total Exp	FY 2009	FY09 % of Total Exp	FY 2012	FY12 % of Total Exp	FY 2013	FY13 % of Total Exp
Student Academic Achievement	\$885,297	35.1%	\$1,112,059	25.9%	\$1,585,903	40.8%	\$2,138,374	41.2%
Student Instructional Support	\$191,398	7.6%	\$375,286	8.7%	\$378,242	9.7%	\$637,643	12.3%
Overhead and Operational	\$649,896	25.8%	\$1,335,634	31.1%	\$1,462,270	37.6%	\$1,605,313	30.9%
Nonoperational	\$794,250	31.5%	\$1,466,173	34.2%	\$462,276	11.9%	\$811,324	15.6%
Grand Total	\$2,520,841		\$4,289,152		\$3,888,691		\$5,192,654	

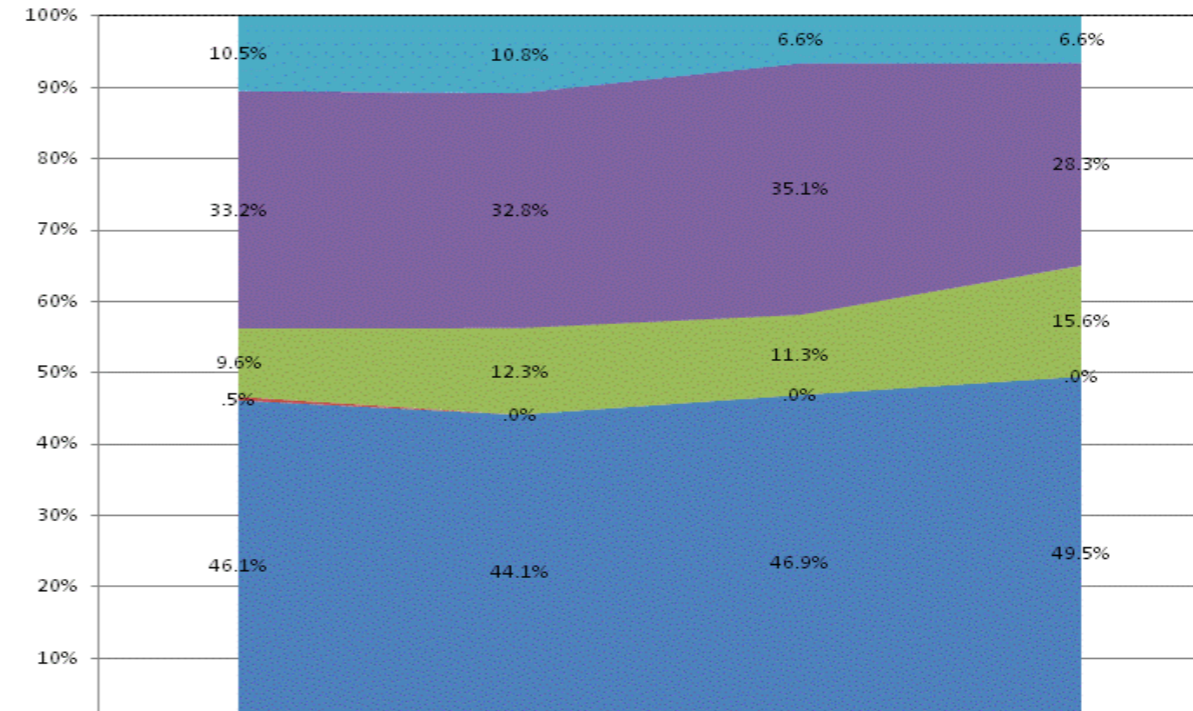
	FY 2006	FY 2009	FY 2012	FY 2013
Student Instructional Expenditures (Academic Achievement plus Support)	42.7%	34.7%	50.5%	53.5%

All Expenditures



	FY2010	FY2011	FY2012	FY2013
Non-Operational	14.4%	11.0%	11.9%	15.6%
Other Overhead and Operational	8.9%	9.3%	5.7%	5.2%
Corporation Administration	27.9%	30.2%	31.9%	25.8%
School Administration	7.9%	10.6%	9.7%	12.3%
Other Student Instructional Support	.4%	.0%	.0%	.0%
Student Academic Achievement	40.4%	38.9%	40.8%	41.2%

Operational Expenditures Only



	FY2010	FY2011	FY2012	FY2013
Other Overhead and Operational	10.5%	10.8%	6.6%	6.6%
Corporation Administration	33.2%	32.8%	35.1%	28.3%
School Administration	9.6%	12.3%	11.3%	15.6%
Other Student Instructional Support	.5%	.0%	.0%	.0%
Student Academic Achievement	46.1%	44.1%	46.9%	49.5%

School Corporation Expenditures by Expenditure Type
Biannual Financial Report Data July 2012 - June 2013
21st Century Charter Sch of Gary (9545)

Account	FY 2006	FY 2009	FY 2012	FY 2013	Increase from FY 2006	Increase from FY 2009	Increase from previous year
Student Academic Achievement							
11100 Regular Programs; Elementary	\$433,074	\$644,925	\$871,343	\$1,122,458	159%	74%	29%
11200 Regular Programs; Middle/Junior High	\$256,346	\$85,091	\$146,849	\$105,170	-59%	24%	-28%
11300 Regular Programs; High School	\$6,187	\$168,707	\$104,026	\$371,999	> 500%	121%	258%
11355 Regular Programs; High School; Academic Honors High Ability Student Programs	\$0	\$0	\$0	\$0	N/A	N/A	N/A
11910 Other Regular Programs; Competency Testing	\$2,330	\$0	\$0	\$0	-100%	N/A	N/A
12150 Gifted And Talented; High Ability Student Programs	\$0	\$0	\$5,350	\$6,482	N/A	N/A	21%
12610 Learning Disability	\$0	\$102,756	\$129,708	\$128,293	N/A	25%	-1%
12900 Other Special Programs	\$0	\$65,958	\$207,801	\$188,961	N/A	186%	-9%
13600 Adult/Continuing Education Programs; Special Interest Programs	\$0	\$7,138	\$22,901	\$43,801	N/A	> 500%	91%
14100 Summer School Programs; Elementary	\$0	\$0	\$16,110	\$13,433	N/A	N/A	-17%
14300 Summer School Programs; High School	\$0	\$0	\$0	\$0	N/A	N/A	N/A
15100 Enrichment Programs; Non-Credit	\$1,428	\$4,890	\$1,606	\$11,656	> 500%	138%	> 500%
17900 Payments to Other Governmental Units Within State; Other	\$0	\$0	\$7,943	\$0	N/A	N/A	-100%
22110 Improvement of Instruction; Service Area Direction	\$0	\$15,014	\$47,965	\$25,461	N/A	70%	-47%
22120 Improvement of Instruction; Instruction and Curriculum Development	\$180	\$0	\$0	\$0	-100%	N/A	N/A
22130 Improvement of Instruction; Instructional Staff Training	\$16,435	\$17,580	\$3,647	\$87,566	433%	398%	> 500%
22190 Improvement of Instruction; Other Improvement of Instructional Services	\$0	\$0	\$20,654	\$25,242	N/A	N/A	22%
22360 Instruction, Related Technology; Network Support	\$21,783	\$0	\$0	\$7,850	-64%	N/A	N/A
22900 Other Support Service, Instructional Staff	\$0	\$0	\$0	\$0	N/A	N/A	N/A
25570 Textbooks for Rent or Resale; Materials and Supplies	\$0	\$0	\$0	\$0	N/A	N/A	N/A
26497 2007 Account Code - Teachers Retirement Fund	\$12,146	\$0	\$0	\$0	N/A	N/A	N/A
Student Academic Achievement Total	\$749,909	\$1,112,059	\$1,585,903	\$2,138,374	185%	92%	35%
Student Instructional Support							
21220 Guidance Services; Counseling Services	\$15,426	\$0	\$0	\$0	-100%	N/A	N/A
21340 Health Services; Nurse Services	\$3,941	\$3,225	\$0	\$0	-100%	-100%	N/A
24100 Office of The Principal	\$153,214	\$372,061	\$378,242	\$637,643	316%	71%	69%
Student Instructional Support Total	\$172,581	\$375,286	\$378,242	\$637,643	269%	70%	69%
Overhead and Operational							
23110 Board of Education; Service Area Direction	\$504,261	\$0	\$0	\$0	-100%	N/A	N/A
23150 Board of Education; Legal Services	\$20,442	\$0	\$2,018	\$2,540	-88%	N/A	26%
23160 Board of Education; Promotion Expenses	\$0	\$0	\$4,625	\$4,692	N/A	N/A	1%
23210 Executive Administration; Office of The Superintendent	-\$211,881	\$353,146	\$746,143	\$623,420	N/A	77%	-16%
23220 Executive Administration; Community Relations	\$3,126	\$4,486	\$0	\$0	-100%	-100%	N/A
23290 Executive Administration; Other Executive Administration Services	\$0	\$275,012	\$0	\$100,000	N/A	-64%	N/A
25110 Fiscal Services; Office of The Business Manager	\$0	\$190	\$0	\$0	N/A	-100%	N/A
25150 Fiscal Services; Payroll Services	\$12,677	\$5,904	\$7,683	\$6,233	-51%	6%	-19%
25160 Fiscal Services; Financial Accounting	\$11,689	\$52,282	\$1,475	\$10,403	-11%	-80%	> 500%
25191 Other Fiscal Services; Refund of Revenue	\$0	\$0	\$29,194	\$2,844	N/A	N/A	-90%
25195 Other Fiscal Services; Bank Account Service Charge	\$988	\$109	\$32	\$317	-68%	191%	> 500%
25720 Personnel Services; Recruitment and Placement	\$285	\$0	\$0	\$0	-100%	N/A	N/A
25790 Personnel Services; Other Professional Services	\$0	\$323,857	\$440,668	\$509,397	N/A	57%	16%
25850 Administrative Technology Services; Network Support	\$0	\$0	\$0	\$77,730	N/A	N/A	N/A
25890 Other Technology Services	\$0	\$0	\$6,266	-\$340	N/A	N/A	-105%
25910 Judgments	\$0	\$0	\$2,500	\$0	N/A	N/A	-100%
26200 Operation and Maintenance of Plant Services; Maintenance of Buildings	\$99,525	\$136,295	\$146,112	\$166,253	67%	22%	14%
26300 Operation and Maintenance of Plant Services; Maintenance of Grounds	\$2,300	\$3,390	\$1,252	\$1,465	-36%	-57%	17%
26400 Operation and Maintenance of Plant Services; Maintenance of Equipment	\$12,409	\$24,719	\$35,231	\$20,503	65%	-17%	-42%

School Corporation Expenditures by Expenditure Type
Biannual Financial Report Data July 2012 - June 2013
21st Century Charter Sch of Gary (9545)

Account	FY 2006	FY 2009	FY 2012	FY 2013	Increase from FY 2006	Increase from FY 2009	Increase from previous year
26600 Operation and Maintenance of Plant Services; Security Services	\$9,363	\$300	\$11,797	\$24,686	164%	> 500%	109%
26700 Operation and Maintenance of Plant Services; Insurance	\$20,015	\$13,511	\$19,047	\$39,710	98%	194%	108%
27100 Student Transportation; Vehicle Operation	\$1,081	\$0	\$0	\$0	-100%	N/A	N/A
27200 Student Transportation; Monitoring Services	\$0	\$0	\$0	\$0	N/A	N/A	N/A
27300 Student Transportation; Vehicle Servicing and Maintenance	\$2,782	\$3,455	\$8,227	\$15,461	456%	348%	88%
27400 Student Transportation; Purchase of School Buses	\$4,521	\$5,508	\$0	\$0	-100%	-100%	N/A
27700 Student Transportation; Contracted Transportation Services	\$2,907	\$0	\$0	\$0	-100%	N/A	N/A
27900 Student Transportation; Other Student Transportation Services	\$0	\$596	\$0	\$0	N/A	-100%	N/A
31200 Food Services Operations; Food Preparation and Dispensing	\$12,823	\$0	\$0	\$0	-100%	N/A	N/A
31400 Food Services Operations; Food Purchases	\$139,504	\$132,874	\$0	\$0	-100%	-100%	N/A
31900 Other Food Services	\$1,032	\$0	\$0	\$0	-100%	N/A	N/A
Overhead and Operational Total	\$649,849	\$1,335,634	\$1,462,270	\$1,605,313	147%	20%	10%
Nonoperational							
33100 Community Service Operations; Direction of Community Services	\$0	\$0	\$0	\$2,590	N/A	N/A	N/A
33200 Community Recreation	\$0	\$300	\$0	\$0	N/A	-100%	N/A
33400 Athletic Coaches	\$2,950	\$6,600	\$0	\$0	-100%	-100%	N/A
33990 Other Community Services; Other	\$0	\$437	\$22,847	\$13,867	N/A	> 500%	-39%
40200 Equipment Purchases over the School's Capitalization Threshold	\$0	\$0	\$0	\$282,490	N/A	N/A	N/A
45100 Building Acquisition, Construction and Improvements	\$45,733	\$0	\$0	\$6,936	-85%	N/A	N/A
45500 Facilities Acquisition and Construction; Rent of Buildings, Facilities, and Equipment	\$393,982	\$360,000	\$360,000	\$509,656	29%	42%	42%
46000 Facilities Acquisition and Construction; Purchase of Moveable Equipment	\$351,585	\$28,452	\$78,686	-\$4,803	-101%	-117%	-106%
47000 Facilities Acquisition and Construction; Purchase of Mobile or Fixed Equipment	\$0	\$0	\$0	\$0	N/A	N/A	N/A
51100 Debt Services; Principal on Debt; Bonds	\$0	\$899,332	\$0	\$0	N/A	-100%	N/A
53350 Debt Services; Lease Rental; School Buses ; Interest	\$0	\$0	\$742	\$589	N/A	N/A	-21%
53450 Debt Services; Lease Rental; Other ; Interest	\$0	\$14,229	\$0	\$0	N/A	-100%	N/A
54200 Common School Fund; Principal	\$0	\$156,824	\$0	\$0	N/A	-100%	N/A
Nonoperational Total	\$794,250	\$1,466,173	\$462,276	\$811,324	2%	-45%	76%
Prorated By Fund							
26491 2007 Account Code - PERF	\$17,608	\$0	\$0	\$0	N/A	N/A	N/A
26492 2007 Account Code - Social Security	\$54,393	\$0	\$0	\$0	N/A	N/A	N/A
26493 2007 Account Code - Workmen's Compensation	\$2,517	\$0	\$0	\$0	N/A	N/A	N/A
26494 2007 Account Code - Group Insurance	\$70,453	\$0	\$0	\$0	N/A	N/A	N/A
26496 2007 Account Code - Unemployment Compensation	\$9,281	\$0	\$0	\$0	N/A	N/A	N/A
Prorated By Fund Total	\$154,252	\$0	\$0	\$0	N/A	N/A	N/A